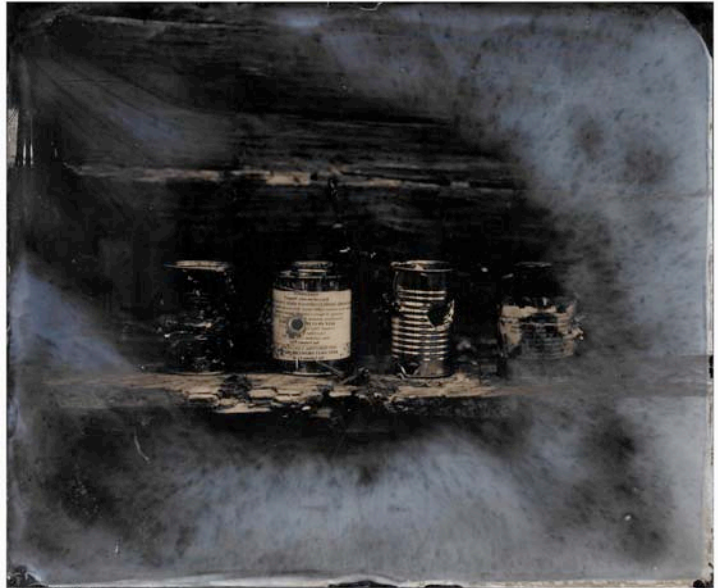


FOR IMMEDIATE RELEASE

John Coffey: The Daily Tintype

August 20, 2010-October 2, 2010

Opening Reception: Friday, August 20, 2010 5 pm –7 pm
Contact: Elizabeth Hubbard
Phone: (505) 954-5721
Fax: (505) 954-5754
Email: ehubbard@gpgallery.com
Gallery Hours: Monday– Saturday, 10 am – 5 pm



The Gerald Peters Gallery is pleased to announce the opening of the exhibit *John Coffey: The Daily Tintype*. Photographer John Coffey is a twenty-first century master of the “lost art” of the wet-plate collodion tintype. This photographic medium was developed in the early 1850’s and produces a high quality negative image on a specially prepared sheet of metal or tin. Originally referred to as the nineteenth century tintype, this technique was used to create cheap, fast, and durable photographic portraiture during the mid 1800’s. Coffey rediscovered the process in the early 1980’s and, after experimenting with other early photographic methods, he finally discovered the arcane and exotic formulas used in making the traditional tintypes.

It was during this time that Coffey recreated the era of the itinerant tintype photographer with horse-drawn wagon by securing “a sturdy, spring wagon I bought from the Amish in Lancaster County, Pennsylvania” and a great workhorse to pull it by the name of Brownie. He then traveled throughout the country stopping at Civil War reenactments, living history museums and country stores, “selling tintype portraits I made wherever I could along the way.”

John Coffey’s modern-day photographs are a mixture of the old and the new. The old is the method itself which is all but obsolete, yet he is always striving to bring twenty-first century innovation into his work. For instance, his “mammoth” plates, 20 X 24 inches in size, are a great deal larger than anything done in the nineteenth century.

His lifestyle on a small farm in rural Upstate New York is as unique as his photography. He shoots photographs almost daily and almost entirely of his surroundings. He does not possess phone, electricity, automobile, or many of the usual comforts of contemporary life. He farms the land for sustenance but photography provides Coffey a special way to document this extraordinary, simple existence. He also runs “Camp Tintype,” which is a series of workshops that teach students the craft of making tintypes. As he describes it, “it is the best known and longest running learning center of wet-plate collodion photography in the world.”

A catalogue of John Coffey images will be available for sale and there will be a reception with the artist on Friday, August 20, 5 pm -7 pm.

The Gerald Peters Gallery is located at 1011 Paseo de Peralta in Santa Fe– just one block from Canyon Road. The gallery is open Monday through Saturday 10-5pm. Call (505) 954-5700 for more information or visit www.gpgallery.com.

Contact: Elizabeth Hubbard, Gerald Peters Gallery, (505) 954-5700 or ehubbard@gpgallery.com

Digital reproduction images available upon request.